

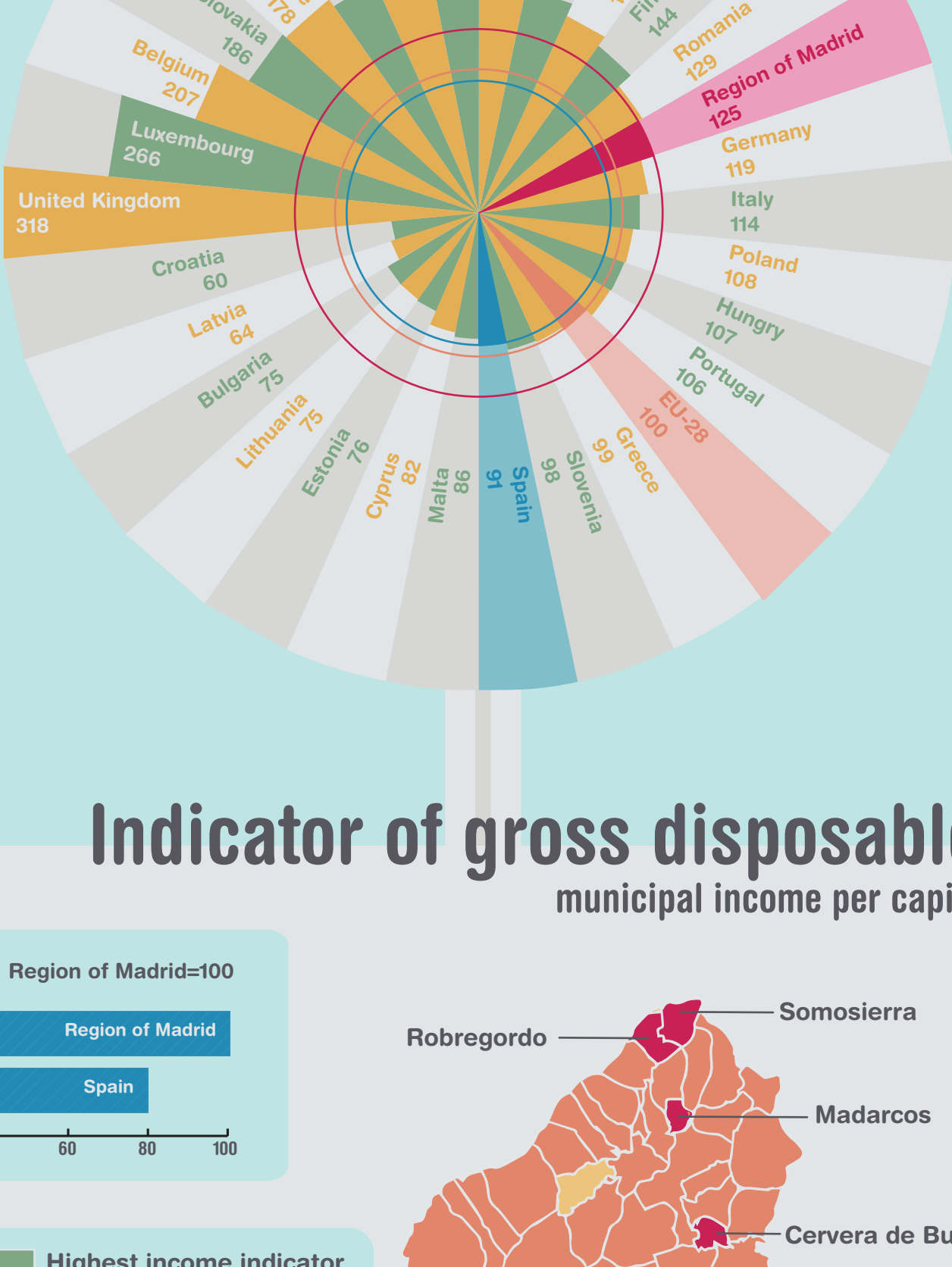
# Region of Madrid

## MADRID'S ECONOMIC OUTLOOK 2016

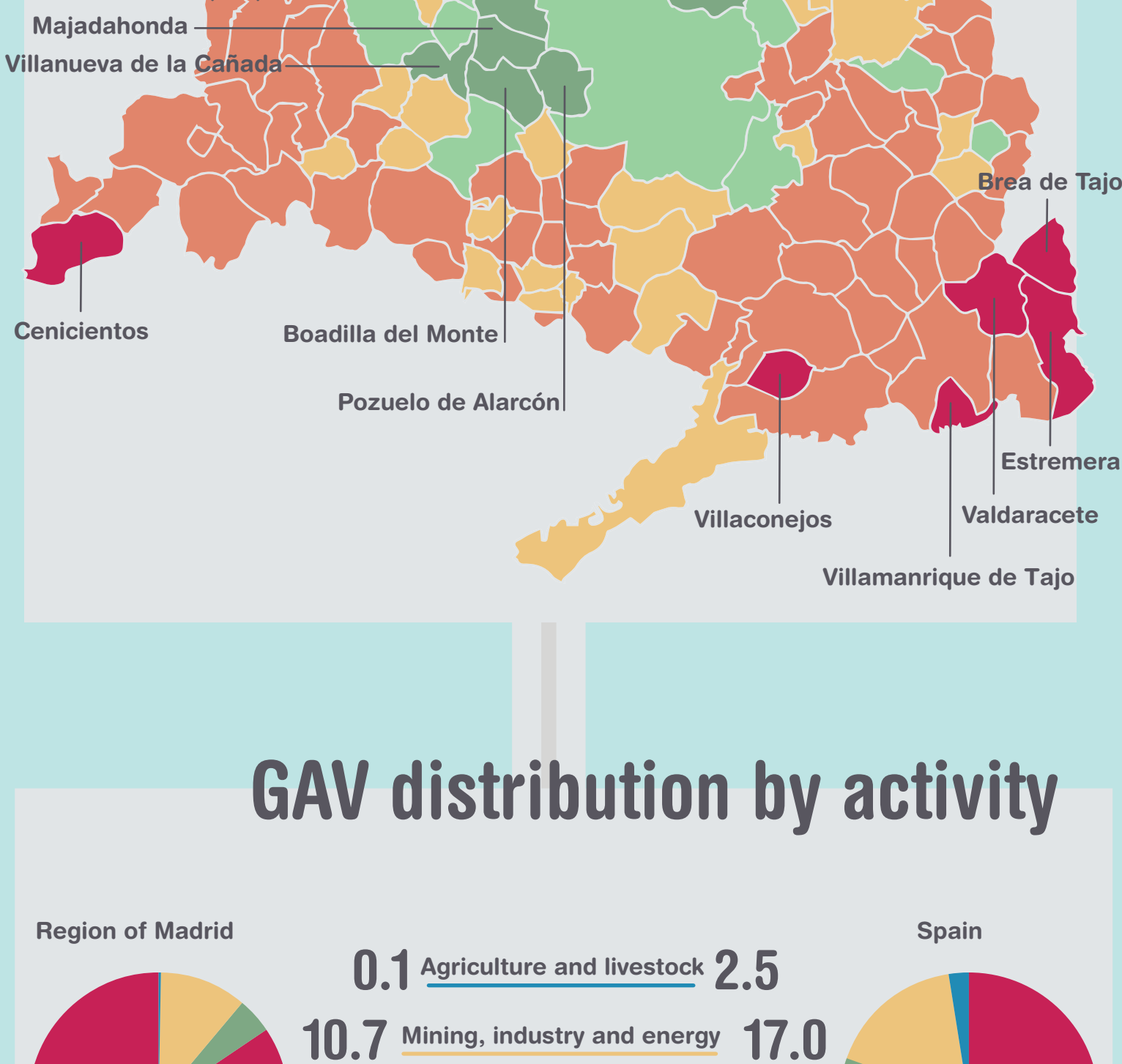
2016

### GDP per cápita

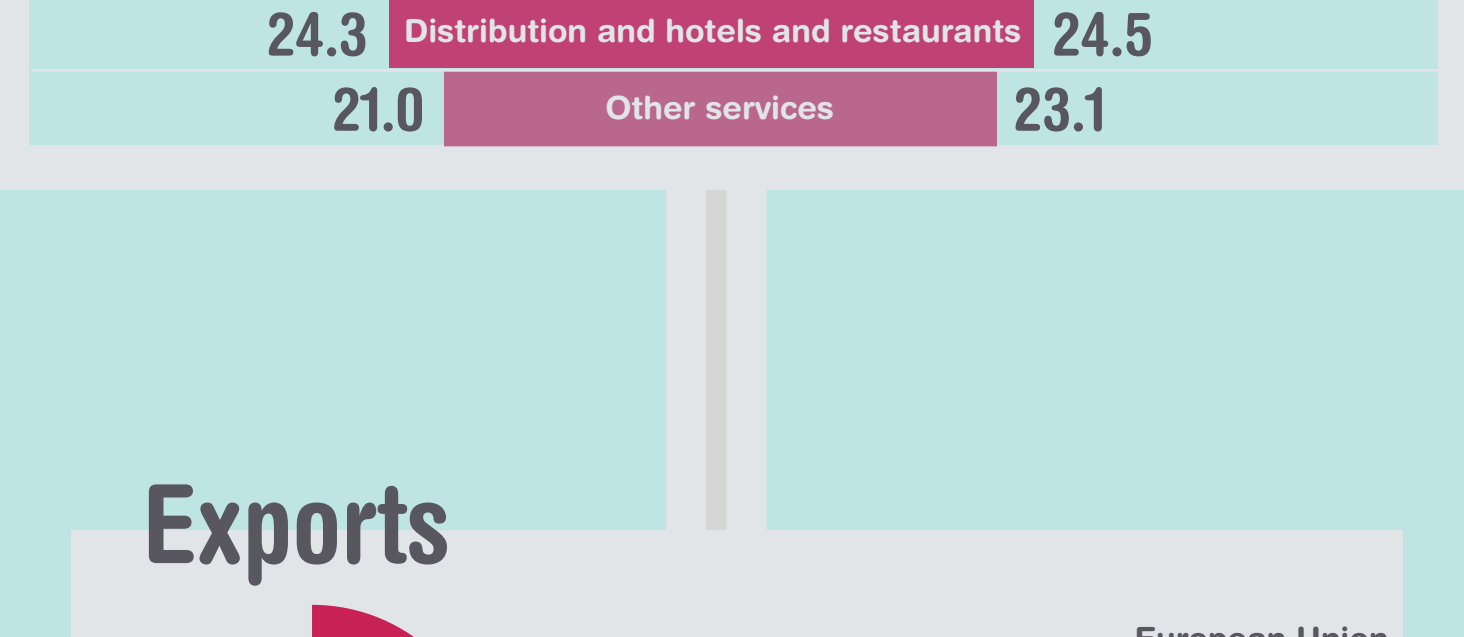
in PPS UE28=100  
Each country represents the European region containing the capital city.



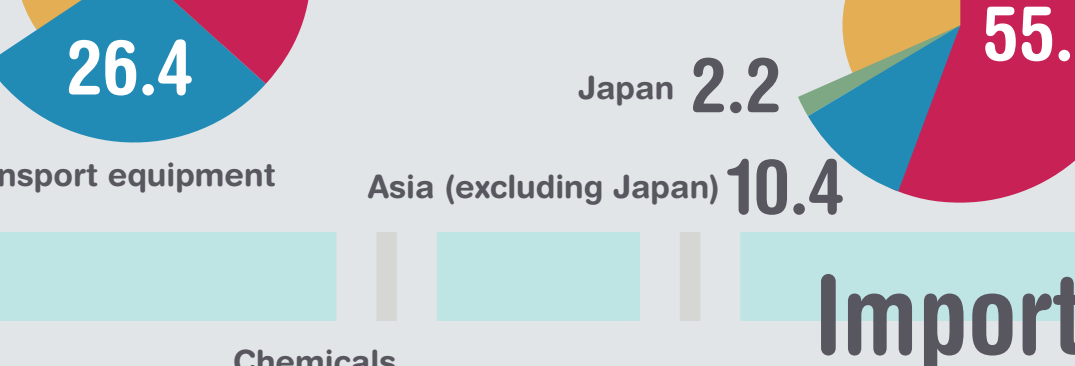
### Indicator of gross disposable municipal income per capita



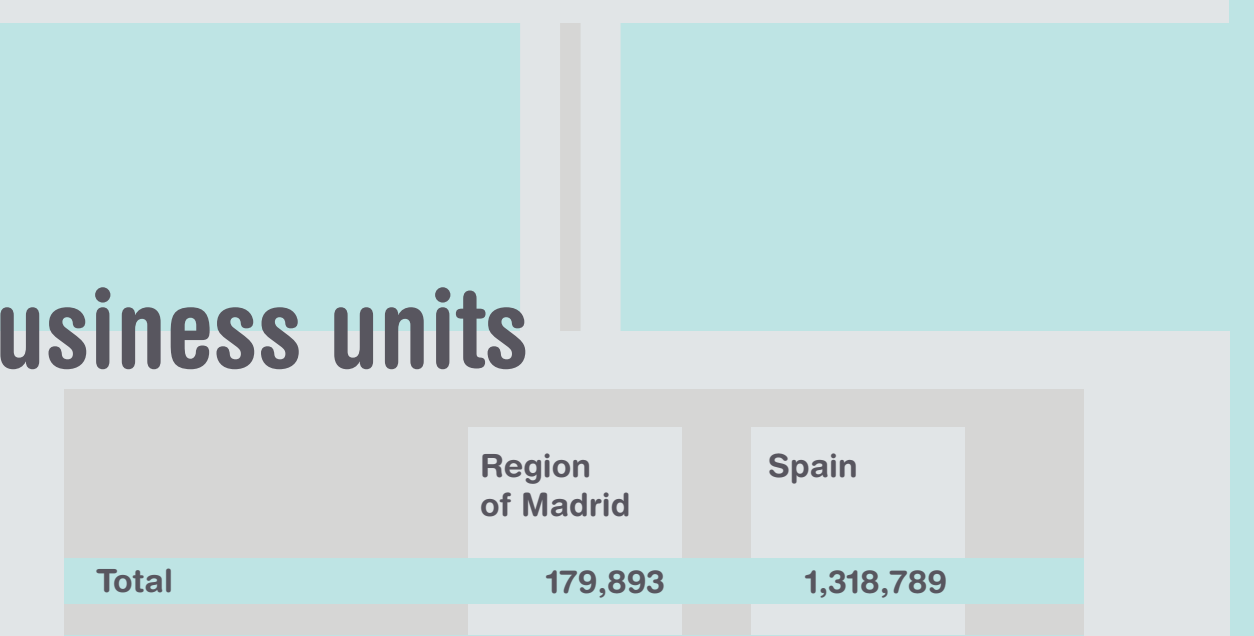
### GAV distribution by activity



#### Predominance of the service sector



### Exports



### Imports



### Business units

	Region of Madrid	Spain
Total	179,893	1,318,789
Born in the year	30,847	265,205
Over 250 employees	1,105	4,955

Madrid-based companies have a life expectancy at birth of 7.48 years, although their life expectancy reaches 13.48 years if the company remains in business for ten years.

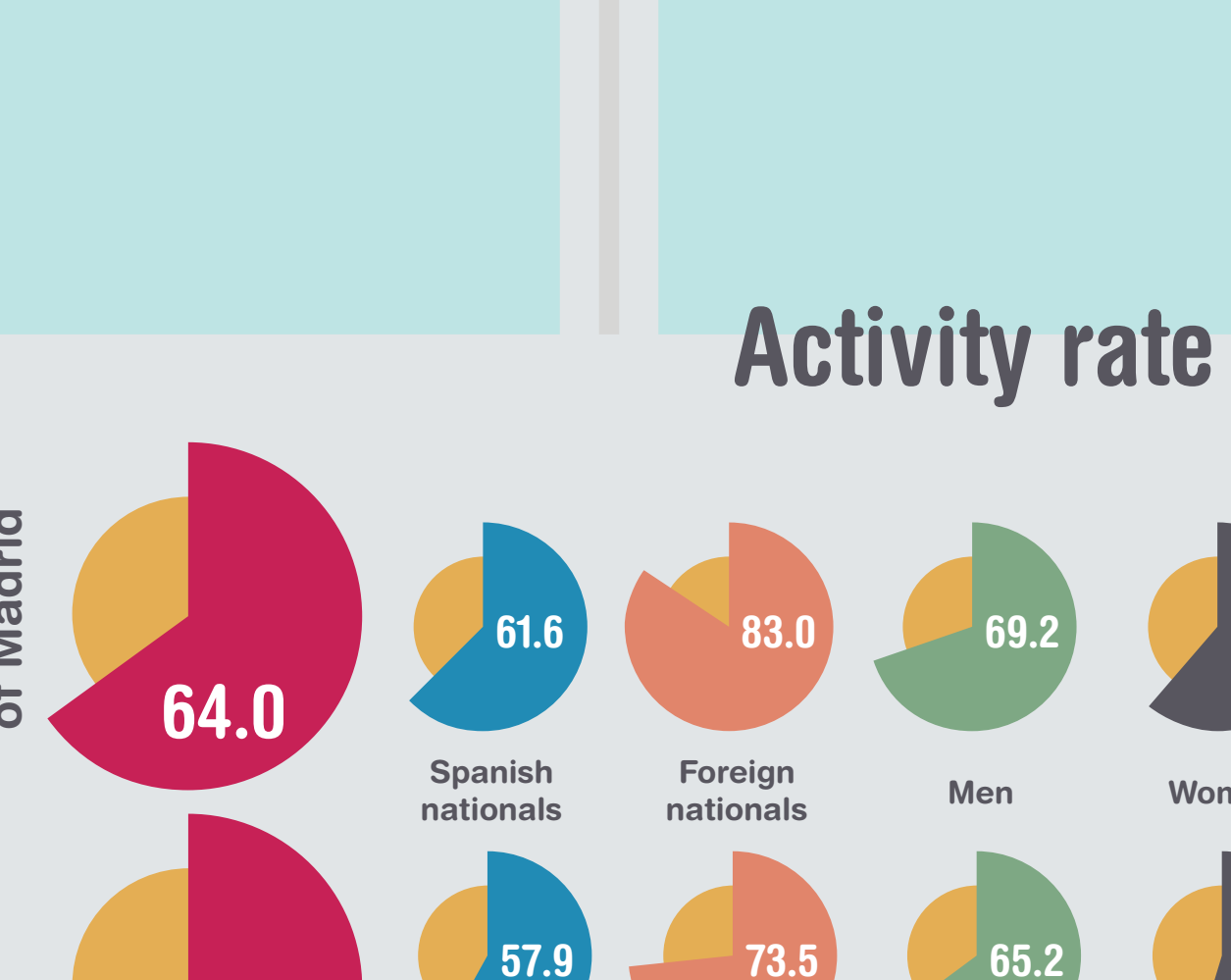
### Madrid Metro Network

is the second largest in Western Europe, only exceeded by the London Underground system, and followed by the Paris Metro

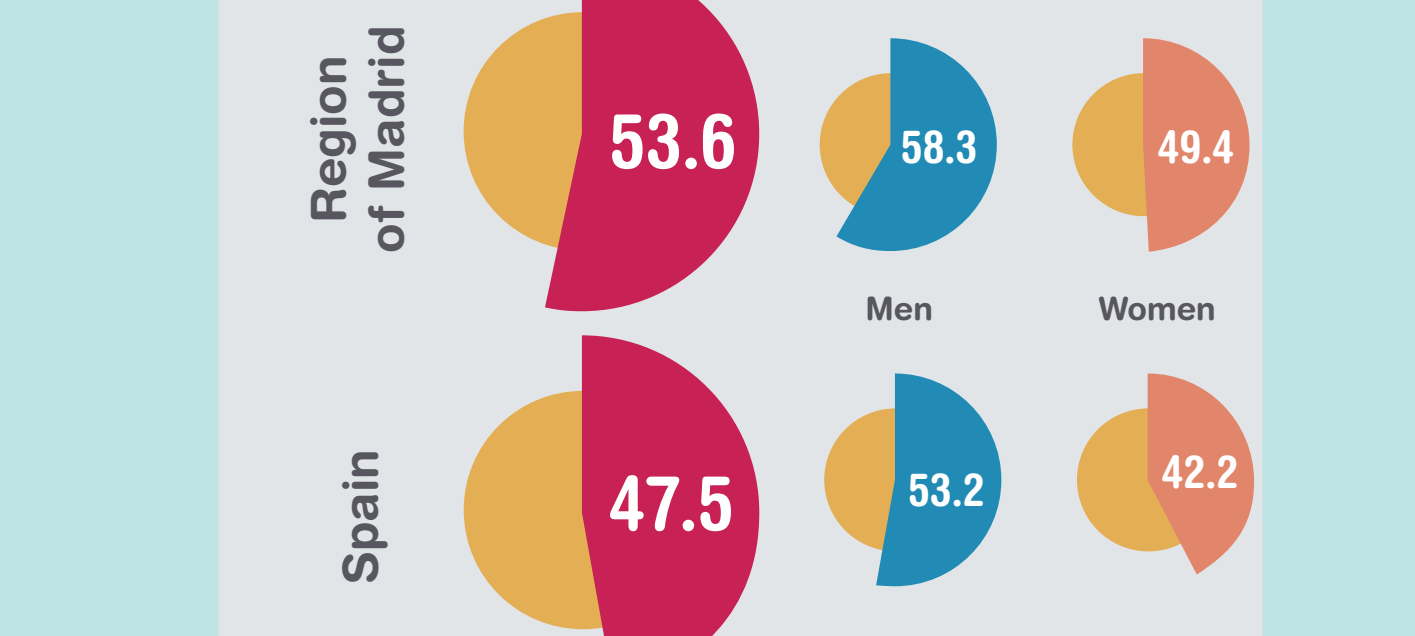
### Road network (km)

	Region of Madrid	Spain
<b>HIGH CAPACITY ROADS</b>	991	2,349
Toll motorways	161	71
Toll-free motorways & highways	622	812
Dual carriageways	208	1,466
<b>REST OF THE NETWORK</b>		
Less than 5m wide		71
5 to 7m wide		812
More than 7m wide		1,466

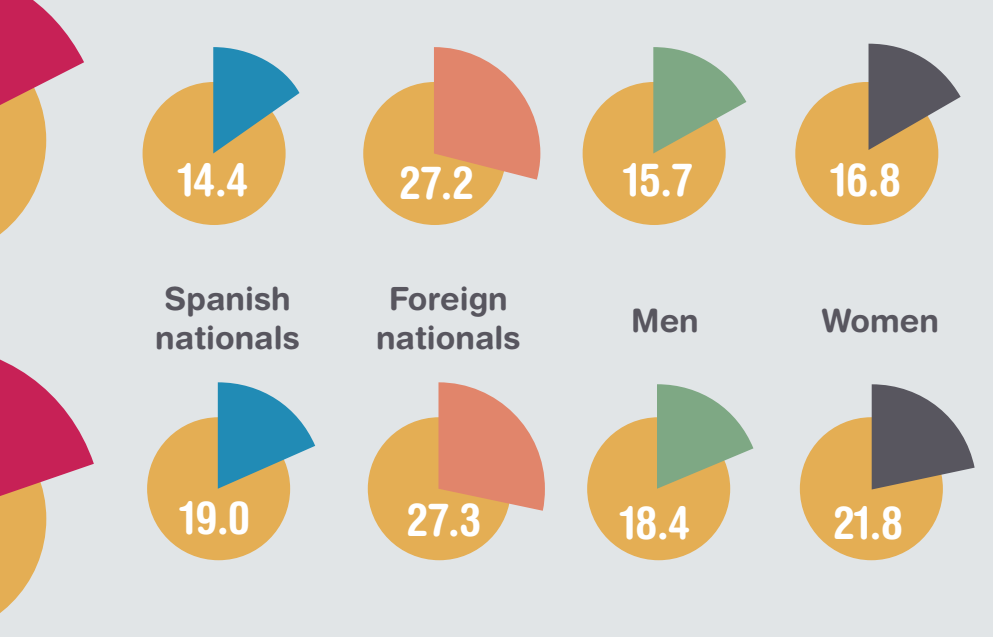
### Profile of average affiliated person



### Activity rate

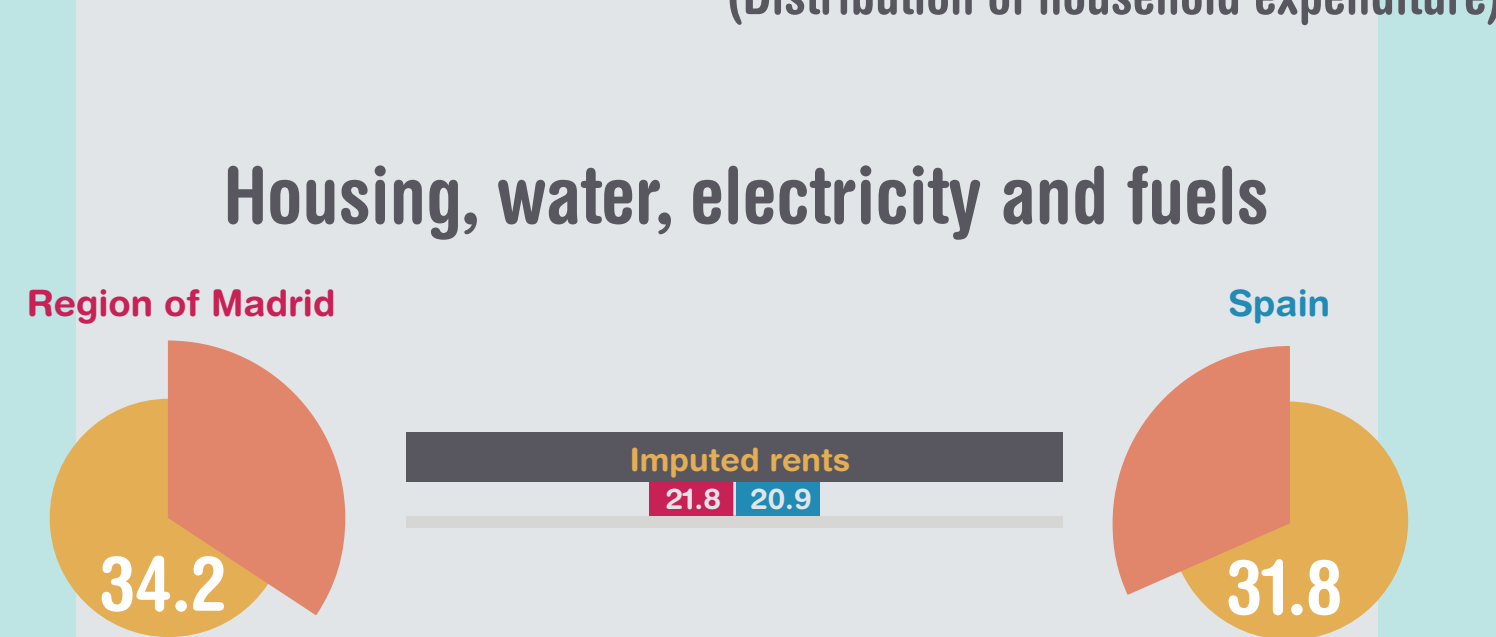


### Employment rate



The percentage of households with all active members employed is 76.7% (Spain 72.1%).

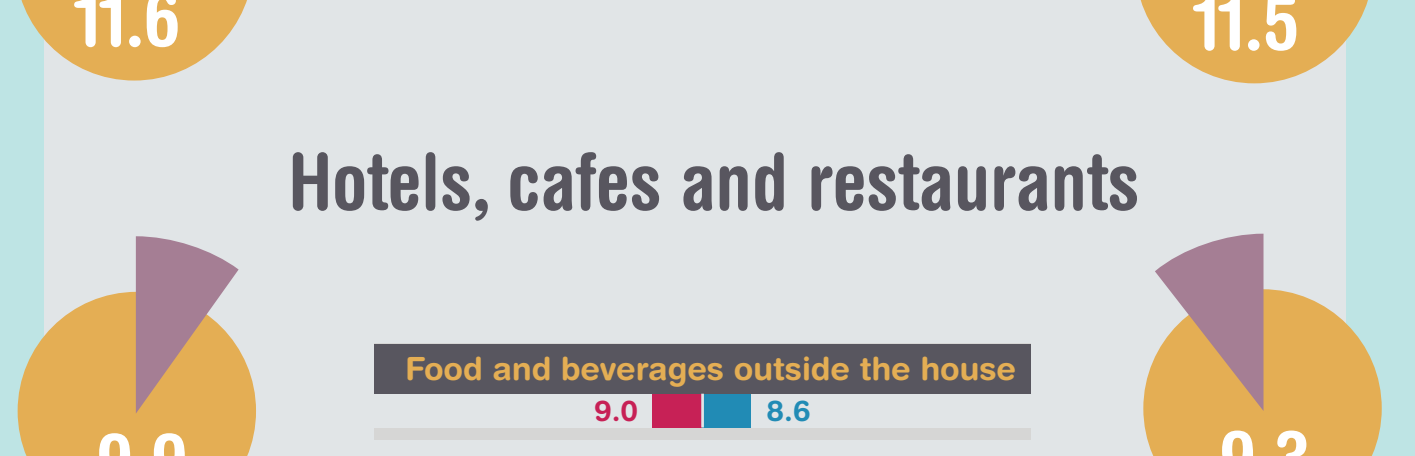
### Unemployment rate



The percentage of households with all active members unemployed is 7.6% (Spain 11.1%).

### Distribution of household expenditure (Distribution of household expenditure)

#### Housing, water, electricity and fuels



#### Food and non-alcoholic beverages



#### Transport



#### Hotels, cafes and restaurants



Comunidad de Madrid