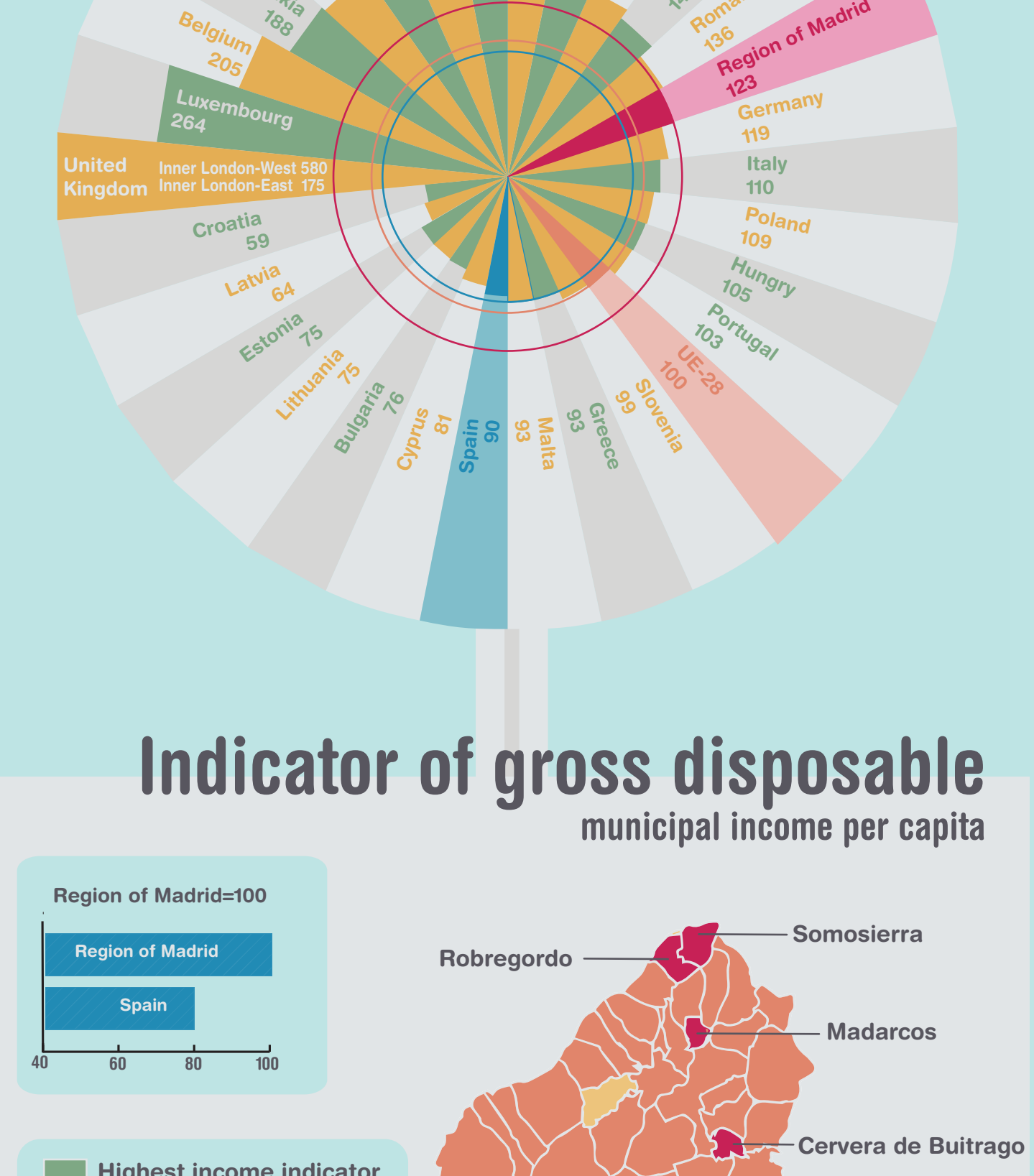


Region of Madrid

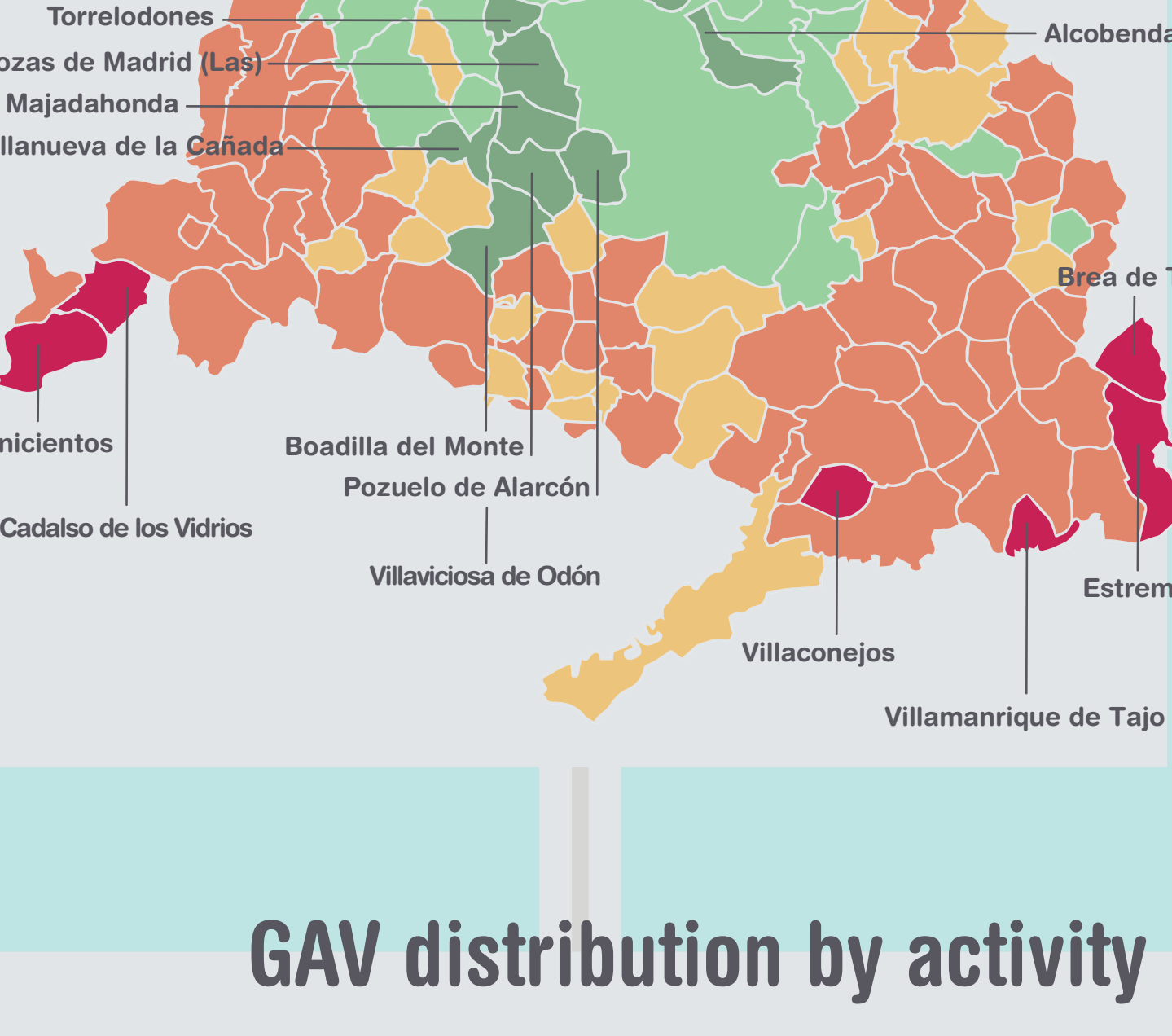
MADRID'S ECONOMIC OUTLOOK 2017

GDP per cápita

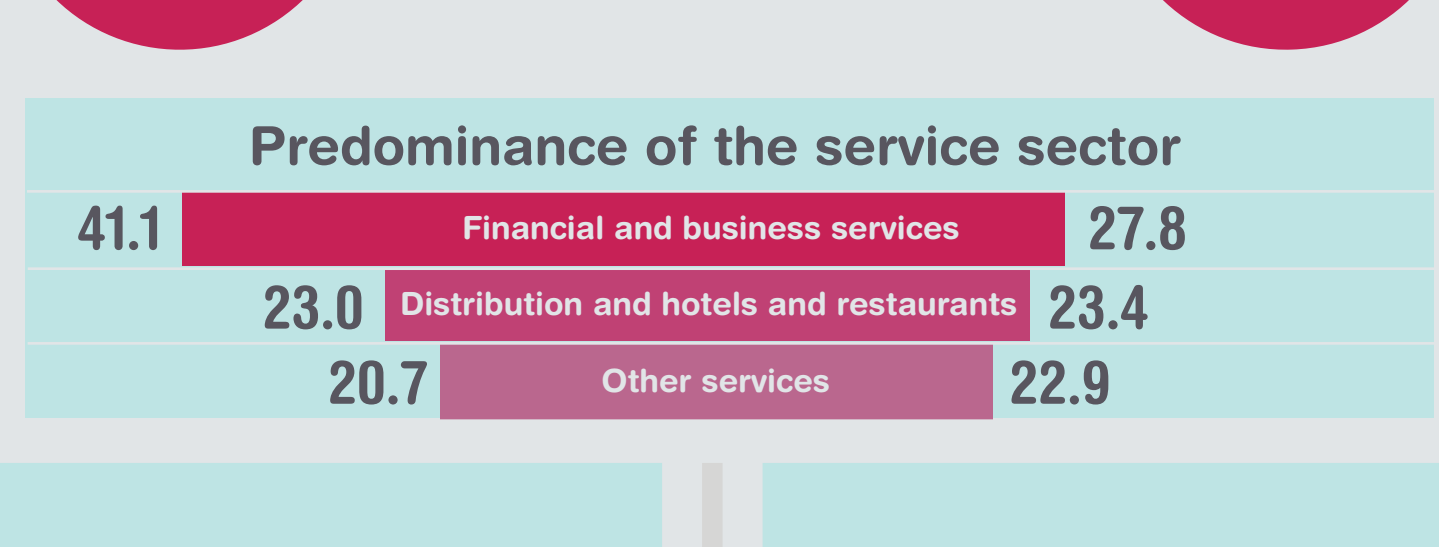
in PPS UE28=100
Each country represents the European region containing the capital city.



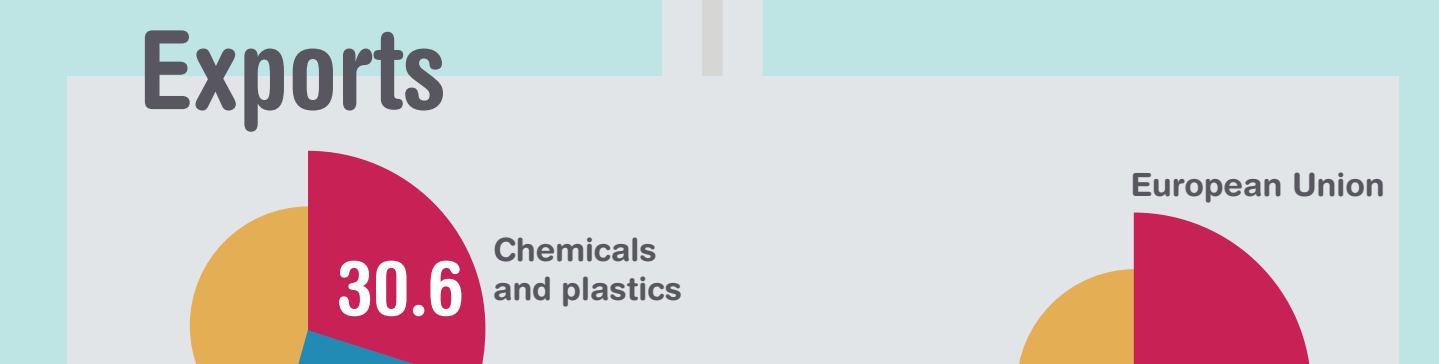
Indicator of gross disposable municipal income per capita



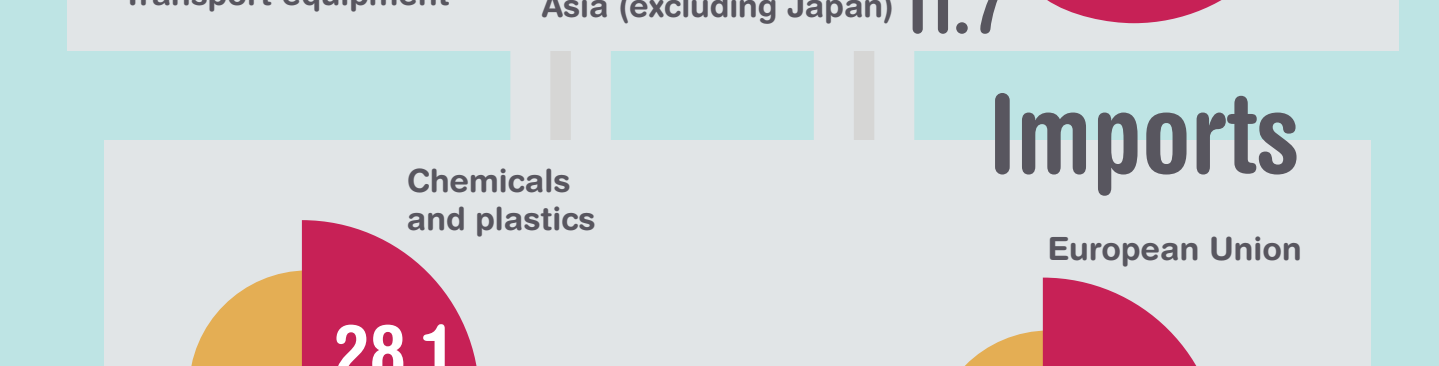
GAV distribution by activity



Predominance of the service sector



Exports



Imports



Business units

	Region of Madrid	Spain
Total	183,174	1,339,813
Born in the year	29,860	256,905
Over 250 employees	1,125	5,181

Madrid-based companies have a life expectancy at birth of 8.14 years, although their life expectancy reaches 15.09 years if the company remains in business for ten years.

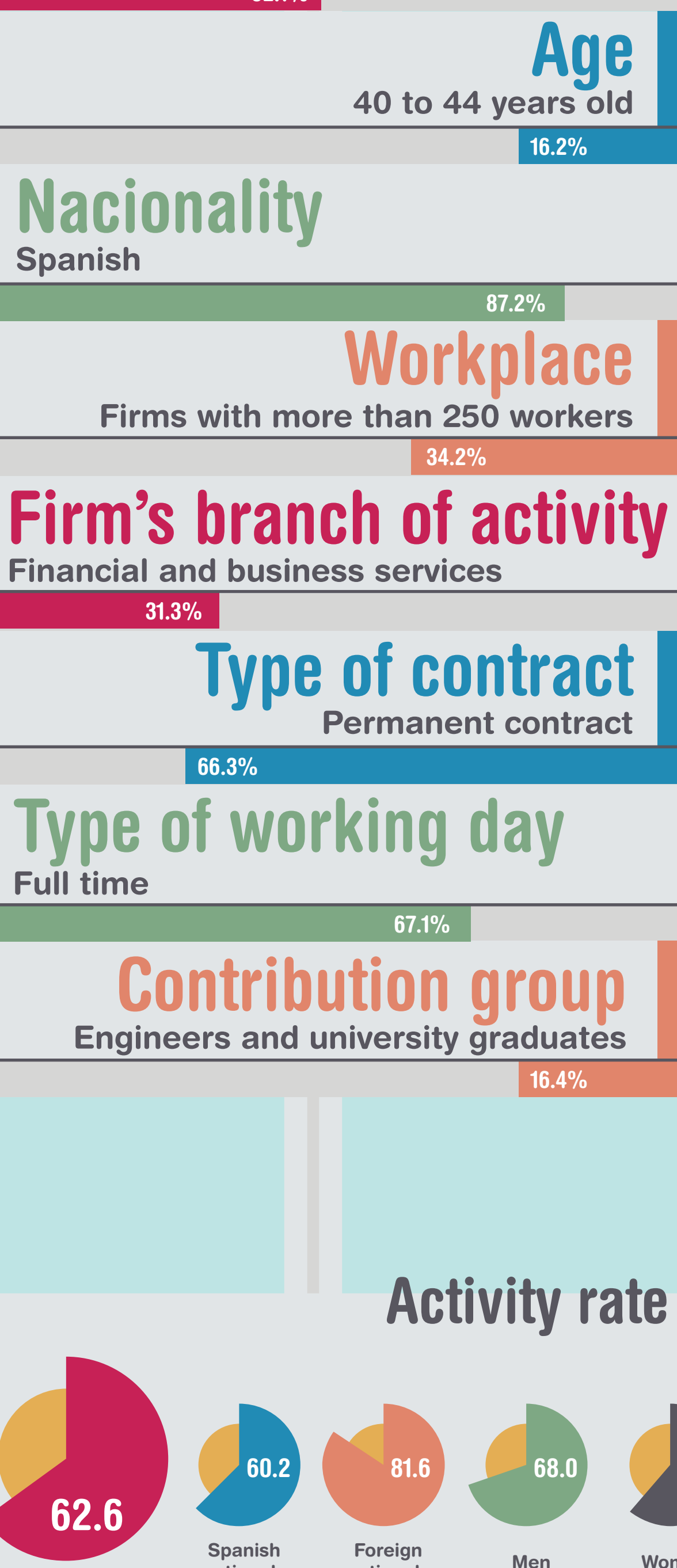
Madrid Metro Network

is the second largest in Western Europe, only exceeded by the London Underground system, and followed by the Paris Metro

Road network (km)

Category	Region of Madrid (km)	Spain (km)
HIGH CAPACITY ROADS	991	2,347
Toll motorways	161	71
Toll-free motorways & highways	622	812
Dual carriageways	208	1,464
REST OF THE NETWORK		
Less than 5m wide		71
5 to 7m wide		812
More than 7m wide		1,464

Profile of average affiliated person



Activity rate

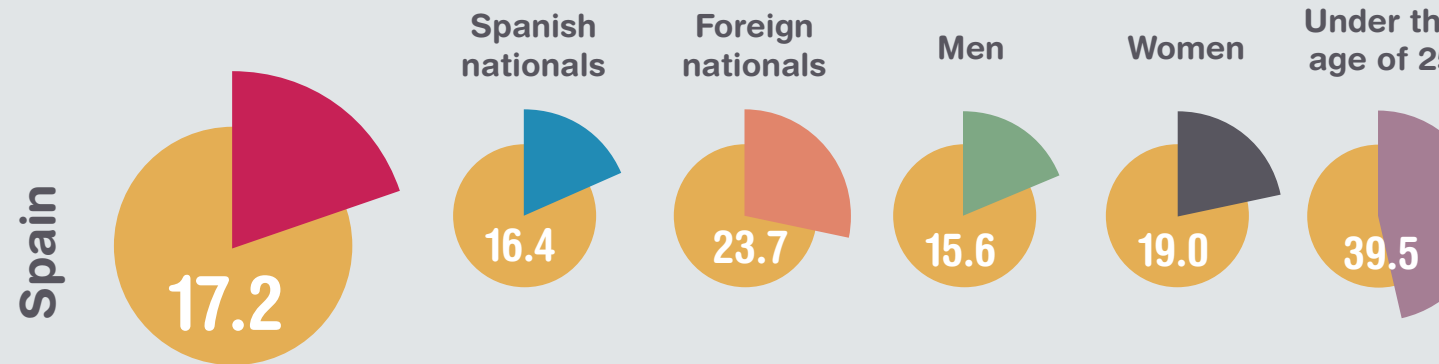


Employment rate



The percentage of households with all active members employed is 80.8% (Spain 75.5%).

Unemployment rate



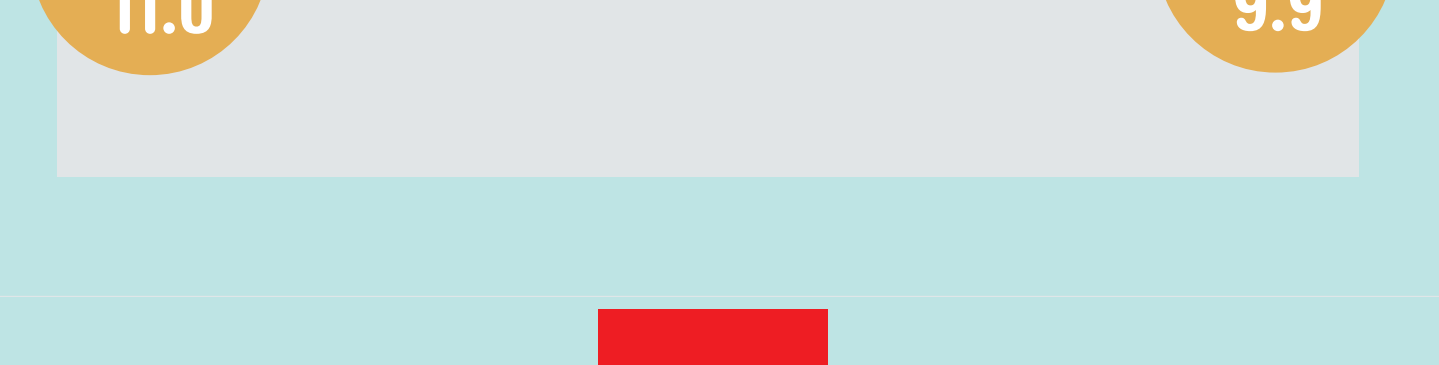
The percentage of households with all active members unemployed is 6.4% (Spain 9.6%).

Distribution of household expenditure (Distribution of household expenditure)

Housing, water, electricity and fuels



Transport



Food and non-alcoholic beverages



Hotels, cafes and restaurants



Comunidad de Madrid